



NEW ANGLES OF NATURAL HEARING

WIDEX **SMARTRIC™**



SOUND LIKE NO OTHER



WITH NEW ANGLES OF NATURAL HEARING, WIDEX SMARTRIC IS THE SMARTEST WIDEX PRODUCT TO DATE

Featuring a groundbreaking design, SmartRIC brings the benefits of unparalleled aesthetics, ultimate convenience, and exceptional focus. Built on the unique Widex technology, this upgraded platform combines innovative hardware with a smarter approach to sound for an experience that can only be found with the Widex SmartRIC.

Discover how the features of the new SmartRIC will help wearers enjoy an active life, a life where they feel more connected and can focus on the voices and sounds they want to hear.

UNPARALLELED AESTHETICS WITH SMART DESIGN

Live confident with Smart Design.

SmartRIC features a groundbreaking design that is modern, sleek, and functional. This striking design is available in five stylish colors. Built on the strong legacy of our high standards for design aesthetics, the SmartRIC appearance was developed to reduce stigma and increase new user acceptance.



Tech Black
(118)



Silver Grey
(119)



Dark Cherry
(116)



Honey Blonde
(114)



Rose Gold
(153)

“The fantastic thing about this product is the way it combines great design with great sound. It looks smart, not just for the sake of smart looks, but also for the sake of smart audiology, with the placement of the microphones improving directionality.”

Anne Mette Jeppesen
Senior Audiology Solution Manager, Widex





ULTIMATE CONVENIENCE WITH SMART POWER AND SMART CONNECTION

Live free with Smart Power.

Dependable and convenient hearing solutions are required to let wearers enjoy the freedom of not having to think about their hearing aids when they are on the go.

With the optimized performance in SmartRIC, wearers can now enjoy the longest-lasting rechargeable RIC hearing aid ever from Widex.

Charge on the go with the sleek and convenient SmartRIC portable charger. A large capacity power source provides up to five recharges of a SmartRIC set, allowing as much as a week before needing to plug back into an electrical source.

Live seamlessly with Smart Connection.

Whether the goal is connecting to friends and family or to technology and devices, Widex has the solutions that deliver positive outcomes.

Each accessory and app within the Widex SmartRIC solution have been thoughtfully designed and strategically implemented to integrate seamlessly into the wearer's world. The result is an enhanced listening experience, allowing them to stay connected to the people and sounds that matter most to them and live life with hearing loss on their own terms.

EXCEPTIONAL FOCUS WITH SMART SOUND AND SMART DIRECTIONALITY

Live active with Smart Sound.

The SmartRIC allows wearers to enjoy natural sound and conversations in more environments with a design to help reduce wind and touch noise.

SmartRIC furthers our SmartWind Manager with an all new and intelligent design of the microphone housing that has been engineered to help limit wind noise and reduce annoying artifact caused when hair or other objects come in contact with the microphones.



Regular hearing aid



Widex SmartRIC



Our longest-lasting rechargeable RIC hearing aid

It's no secret that battery life is a crucial factor today. As hearing aid technology allows for more functionalities, better batteries are required. With improved battery performance, wearers can now enjoy our longest-lasting rechargeable RIC ever, providing extended wear and more streaming time.

The SmartRIC Portable Charger offers ...

A full day of natural hearing on one charge

Wearers enjoy up to 37 hours of battery life without streaming and up to 27 hours with 8 hours of streaming so even the heaviest streamer will be able to use the hearing aids for more than a full day without charging.

Convenience meets lifestyle

The charger's compact size fits effortlessly into a bag or pocket for easy portability.


Hassle-free charging for life on the go

With a SmartRIC portable charger, wearers are empowered with hassle-free charging, mobility, and peace of mind. Whether they're spending a weekend with their family, going hiking, or enjoying a vacation, this portable charger provides up to five full hearing aid charges, allowing over a week of freedom.

No guesswork, just assurance

LED indicators provide instant charging status visibility, giving your wearers confidence that their hearing aids are ready when needed.





“Just like our audiological and engineering philosophies, our design approach is focused on delivering great user experiences.

An unwillingness to compromise means we design everything with a level of craftsmanship, quality, and excellence that you can not only hear, but clearly see and feel as well.”

Martyn Beedham
Senior Design Director, Widex

EMBRACING THE BEST OF WIDEX

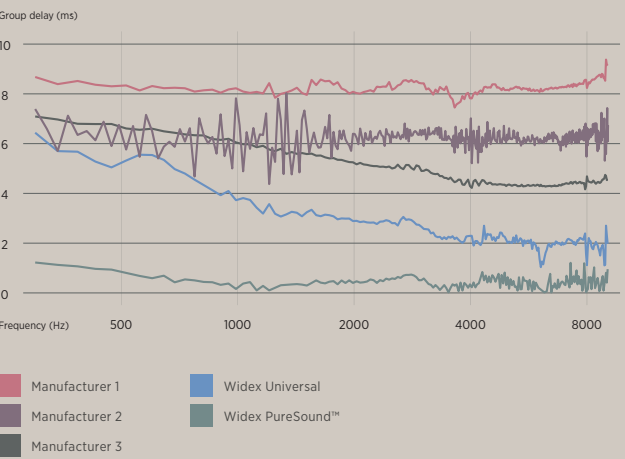
Widex SmartRIC incorporates celebrated features of Widex technology.

Our data also speaks to the naturalness of the Widex sound with 74% of Widex Moment™ wearers saying that it is easy to get accustomed to the Widex sound.*

This makes Widex hearing aids a good choice for both current hearing aid wearers and for first-time wearers. With every Widex hearing aid, we use advanced technology to craft a natural hearing experience, aspiring to make people forget about their hearing loss.

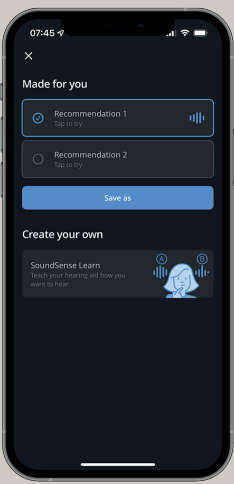
PureSound™ with ZeroDelay™ technology:
The fastest signal processing in the industry

Widex has always been an industry leader when it comes to hearing aid signal processing time. Our Widex PureSound™ is an ultra-fast signal processing pathway that offers the most natural sound for hearing aid wearers with mild to moderate hearing loss. This is made possible by our ZeroDelay™ technology, part of the unique dual signal pathway design in the Widex SmartRIC. We can eliminate unnatural sound quality caused by delay-based distortion, allowing wearers to enjoy an incredibly natural hearing experience.



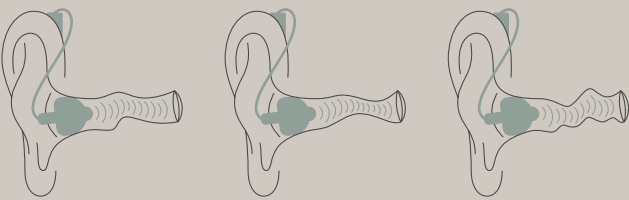
MySound:
More control and more personalization

MySound, our powerful and intuitive AI-assisted personalization, is founded on the philosophy that no matter how good technology becomes, it means nothing without the input of the user. And the more comprehensive their input, the more detailed the insights available to Hearing Care Professionals can be.



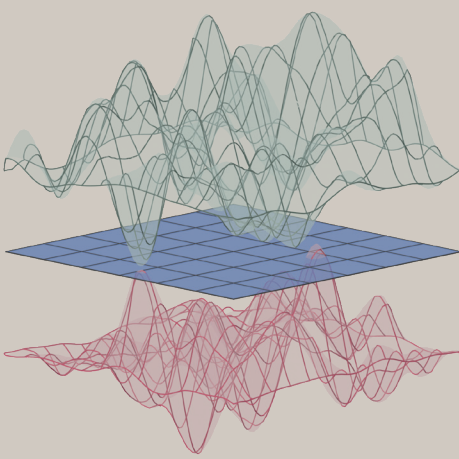
TruAcoustics:
Every ear canal is different

An ear canal has its own unique shape, size, curves, and grooves. So, we tailor hearing aid amplification to the individual user, instead of basing it on data gained from artificial measurements recorded using an artificial ear. This is achieved through TruAcoustics, advanced technology that intelligently measures and calculates the relationship between the ear canal's resonances, the direct and amplified sound, and the potential sound leakage.

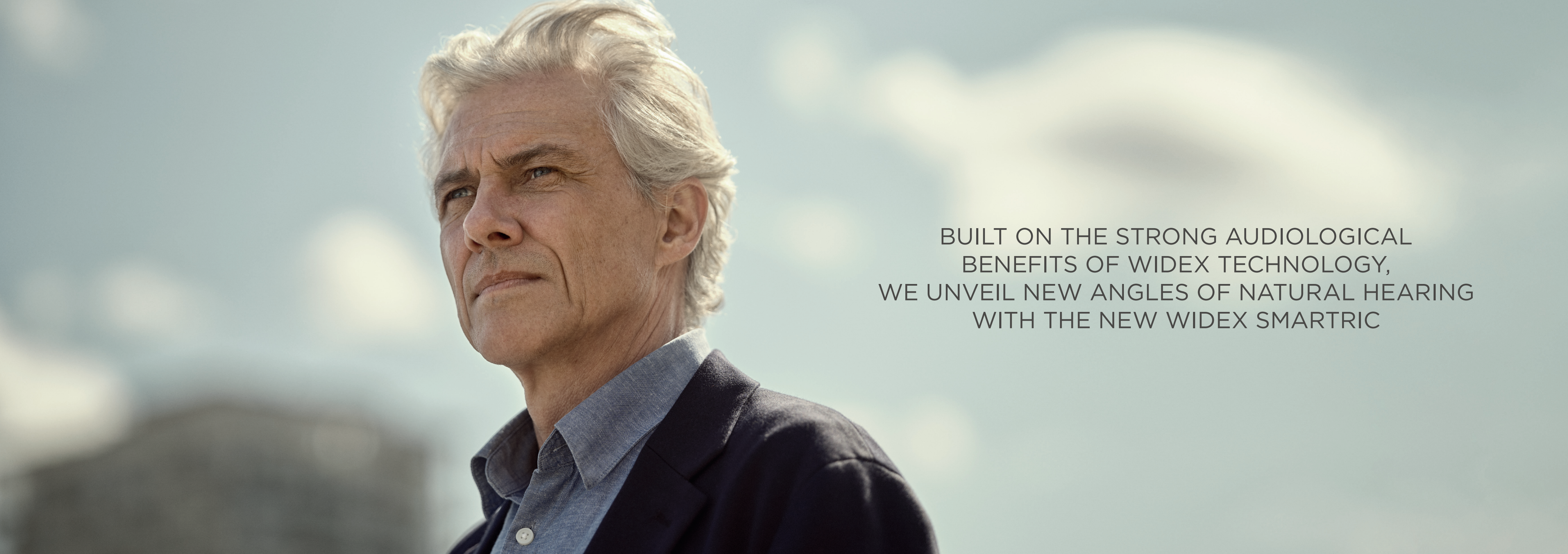


Speech Enhancer:
Stay focused in every conversation

We use fast-acting speech detection mechanisms to emphasize the desired speech signal. Through advanced analysis that continuously adapts sound processing to any challenging situation, we use the Speech Enhancer to reduce bothersome background noise to below the hearing threshold of the user, without compromising speech.



*Ziegler et al. (2023). The Widex Sound Philosophy: A Global Perspective on Natural Sound, Innovative Technology, and User Satisfaction. WidexPress 53.



BUILT ON THE STRONG AUDIOLOGICAL
BENEFITS OF WIDEX TECHNOLOGY,
WE UNVEIL NEW ANGLES OF NATURAL HEARING
WITH THE NEW WIDEX SMARTRIC

THE SMART SOLUTION

Hearing aid wearers are fully supported with a complete SmartRIC ecosystem. They can enjoy natural hearing, on the go and fully individualized to their hearing needs.

SMARTRIC HEARING AIDS

Widex SmartRIC can help wearers engage with the world as naturally as possible with better directionality, reduced wind and touch noise, and improved battery life.

Longest battery life yet for a Widex RIC

37 hours without streaming

27 hours with 8 hours of streaming



PORTABLE CHARGER

With the SmartRIC portable charger, you can empower wearers with hassle-free charging, mobility, and peace of mind.

- Sleek and stylish look and feel
- Enclosed battery supports on-the-go lifestyle
- Uses galvanic charging for increased efficiency

5 full hearing aid charges

7 days of full use before charging the charger



WIDEX MOMENT APP

The intuitive and easy-to-use Moment smartphone app, for both iOS and Android devices, gives wearers control over a wide range of functions and settings on their hearing aids. Among many other features, the app provides access to the powerful sound personalization of MySound, direct streaming of music, video and calls, and tips and advice about using Widex SmartRIC with My Guide.



The Widex Moment app works with the following Widex Moment models: Widex SmartRIC (MRRLD), sRIC R D (MRR4D), RIC 312 D (MRB2D), BTE R D (MBR3D) and BTE 13 D (MBB3D).



Apple, the Apple logo and iPhone are trademarks of Apple Inc., registered in the U.S. and other countries. App Store is a service mark of Apple Inc. Android, Google Play and the Google Play logo are trademarks of Google Inc.

ALL SMART CONNECTION ACCESSORIES

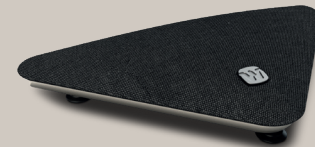
The stylish range of accessories to maximize the Widex SmartRIC experience.

WIDEX TV PLAY™ FOR TV SOUND LIKE NEVER BEFORE

Outstanding sound performance in a discreet design. Easy to set up and compatible with Widex 2.4 GHz-enabled hearing aids. Provides direct, stable stereo streaming into the ears. Just play and stay connected.

FEATURES

- Maximum streaming stability
- Outstanding sound
- Award-winning design
- User-friendly control via the Widex Moment* or Evoke™ app, RC-DEX or 2.4 GHz-enabled hearing aids



WIDEX SOUND ASSIST™ AN ASSIST FOR ANY SITUATION

Small and discreet multi-functional streaming device compatible with Widex 2.4 GHz-enabled hearing aids. Provides microphone, Bluetooth, and telecoil modes to assist in a variety of environments.

FEATURES

- Table and partner microphone function
- Audio and hands-free streaming
- Remote control of hearing aid functions
- Telecoil mode
- Three hours for full charge
- Up to ten hours battery life (mixed use)



WIDEX SOUNDCONNECT FOR SEAMLESS COMPUTER AUDIO STREAMING

The Widex SoundConnect is small, discreet and easy to use by inserting the device into a standard USB port on your personal computer. It provides hassle-free audio streaming from computer applications, such as Microsoft Teams, Skype, Zoom, music players and more, directly to 2.4 GHz-enabled hearing aids.

FEATURES

- Plug-and-play device (no setup required)
- Range of 26ft (line of sight)
- Moment app compatible
- An easy way to stay virtually connected



In case your customers already have one of the DEX devices below, they can continue using them with the Widex SmartRIC.

TV-DEX FOR ENJOYING TV

A palm-sized, user-friendly wireless assistive listening device designed for enjoying TV and audio. Allows up to 10 hours of uninterrupted stereo TV or hi-fi sound between recharges. Ideal for those with non-2.4 GHz Widex hearing aids.

FEATURES

- High-quality audio
- EchoFree™ with no audible delay
- Inputs for both TV and hi-fi systems
- Room Off feature
- Ten hours of non-stop capacity
- Rechargeable using the TV-Base



COM-DEX KEEPS YOU CONNECTED, ALWAYS

A true hands-free device for streaming high-quality sound from any mobile phone to hearing aids. Ideal for those with non-2.4 GHz Widex hearing aids.

FEATURES

- True hands-free communication
- Compatible with most mobile phones
- Stream audio from all Bluetooth® devices
- Available in three stylish colors
- Eight hours of streaming time
- Eight days of standby/control time*
- Comfortable fabric lanyard
- Control your hearing aids via COM-DEX app (iPhone® only)



*12 hours per day



RC-DEX EASY REMOTE CONTROL

A stylish, compact and user-friendly remote control that gives wearers better control of selected hearing aid functions. Allows the user to adjust volume and change between programs quickly and discreetly. Small enough to fit on a keyring. A lock switch prevents the remote control from being activated accidentally.

FEATURES

- Program toggle
- Volume up/down
- Keyring attachment
- Approximately 12 months of battery life
- Lock switch



PHONE-DEX 2 FOR EASY LANDLINE USE

An all-purpose, cordless phone that streams crystal clear sound directly to your hearing aids. Connects automatically with Widex hearing aids and provides you with excellent speech understanding in both ears. Also works as a conventional phone.

FEATURES

- Integrated answering machine
- Range from base up to 164 feet
- Stores up to 150 contacts
- 320 hours of standby time and 14 hours of call time
- Additional handset available separately





The Bluetooth® word mark and logos are owned by the Bluetooth SIG, Inc. and any use of such marks by WSAUD A/S is under license. Other trademarks and trade names are those of their respective owners.

Widex is a registered trademark of WSAUD A/S. DBR01WS/0124

Learn more at [widexPRO.com](https://www.widexPRO.com)